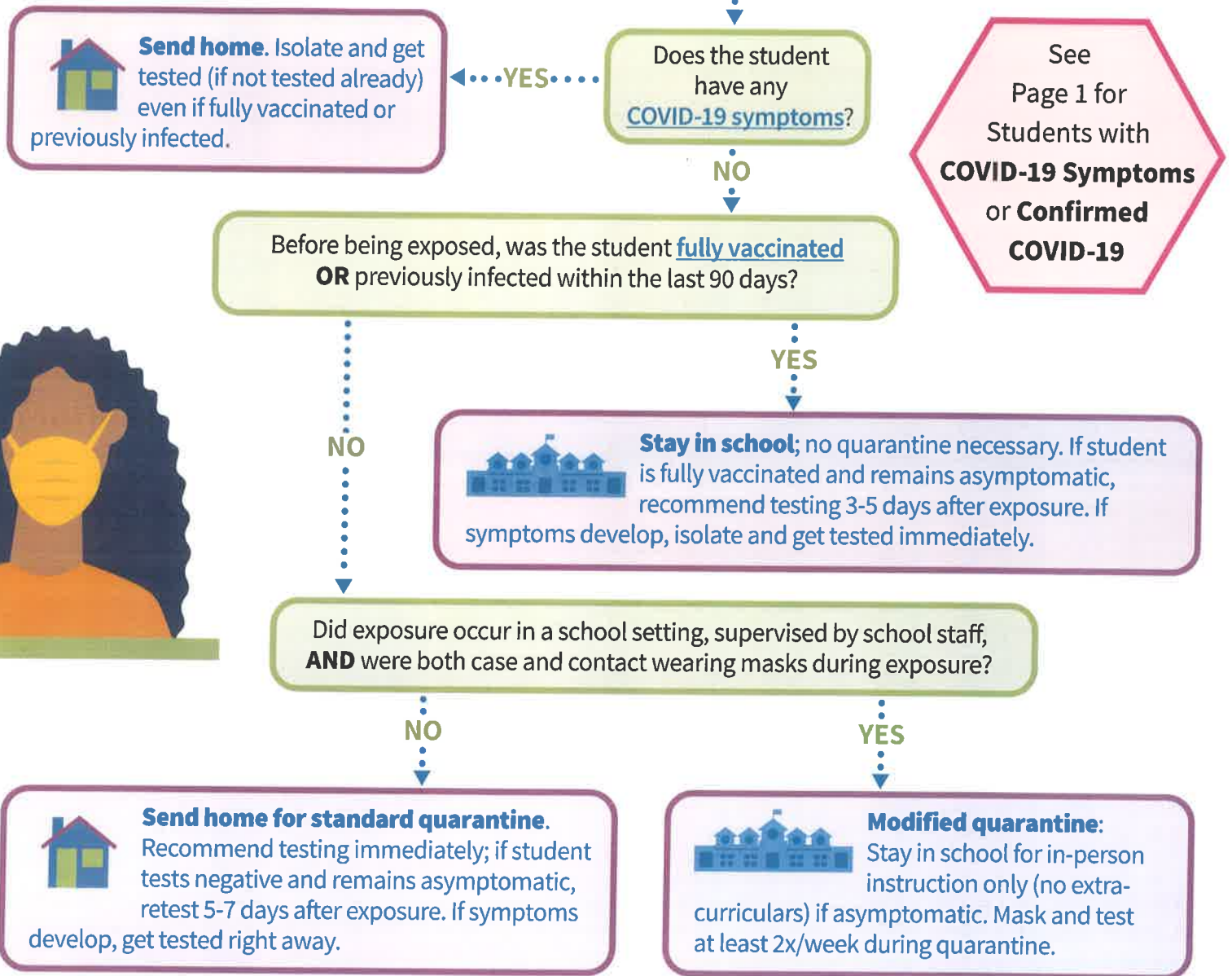


Managing COVID-19 exposure at school

What to do if a student is a close contact of someone with COVID-19



Positive test: Stay home in isolation and exclude from in-person instruction for at least 10 days from symptom onset (or from test date if no symptoms). Isolation can end after 10 days **IF** fever-free (without using fever-reducing medication) for at least the previous 24 hours **AND** other symptoms improving.

Negative or no test: Standard or modified quarantine can end after day 10 following last exposure if student remains asymptomatic.* Quarantine can end after day 7 following last exposure if the student remains asymptomatic and tests negative on day 5 or later.*

*Continue monitoring for symptoms and following all recommended preventative measures through day 14 (masking, hand washing, avoiding crowds, etc). Isolate and get tested if symptoms develop.

Staff and employers are subject to Cal/OSHA COVID-19 ETS or Aerosol Transmissible Diseases standard and should review those requirements.